



*WFP celebrates and embraces diversity. It is committed to the principle of equal employment opportunity for all its employees and encourages qualified candidates to apply irrespective of race, colour, national origin, ethnic or social background, genetic information, gender, gender identity and/or expression, sexual orientation, religion or belief, HIV status or disability.*

**Data Scientist Fellowship  
Vulnerability Analysis and Mapping(VAM) / Geographic Information System (GIS)  
Food Security and Nutrition Analysis Service  
Eastern and Southern Africa Regional Office  
Nairobi, Kenya**

The United Nations World Food Programme (WFP) is the world's largest humanitarian agency fighting hunger worldwide, saving lives in emergencies and using food assistance to build a pathway to peace, stability and prosperity for people recovering from conflict, disasters and the impact of climate change.

At WFP, people are at the heart of everything we do, and the vision of the future WFP workforce is one of diverse, committed, skilled, and high performing teams, selected on merit, operating in a healthy and inclusive work environment, living WFP's values (Integrity, Collaboration, Commitment, Humanity, and Inclusion) and working with partners to save and change the lives of those WFP serves.

**BRIEF DESCRIPTION OF THE DIVISION**

The Eastern and Southern Africa Region (ESARO) covers a diverse set of countries facing complex humanitarian and development challenges, including food insecurity, climate shocks, and displacement. WFP works across the region to provide life-saving assistance, build resilience, and strengthen national capacities to achieve Zero Hunger.

The Eastern and Southern Africa Region (ESARO) in Nairobi provides strategic guidance, oversight, and support to Country Offices to ensure effective program delivery and operational excellence.

The Food Security and Nutrition Analysis Service is a technical information and decision support service aimed at supporting operations within WFP and with government and partners. The unit aims to provide high quality, timely and effective information to support and inform organizational positioning, operational decision-making, and well designed and better-targeted programmes.

This assignment will support the regional team for Eastern and Southern Africa to further build geospatial analysis and mapping capacity among country offices, to ensure the right tools are in place to enable both regional and country teams to conduct regular analyses and produce timely actionable products. It will combine expertise in geospatial analysis and weather and climate to support the region with discrete analysis pieces on both the whole region and select countries at the intersection of climate and food security.

**GENERAL INFORMATION**

- **Type of Assignment: Fellowship**
- **City and Country of assignment: Nairobi, Kenya**
- **Hiring Unit: Food Security and Nutrition Analysis Service, Eastern and Southern Africa Regional Office**
- **Supervisor Role: Programme Policy Officer**
- **Working arrangement: In person**
- **Duration of assignment: up to 12 months**

- **Expected Starting Date: Summer 2026**
- **Number of available positions: 1**

## **DUTIES AND RESPONSIBILITIES**

The Data Scientist will be responsible for:

- Conducting spatial and temporal analyses of food security datasets across multiple countries to identify trends, anomalies, and risk patterns.
- Advising country teams on the design, implementation, and analysis of household food security assessments, including sampling strategies and indicator construction.
- Supporting the integration of remotely sensed and non-traditional data sources (e.g., mobile phone data, market price feeds, social media signals) into predictive models of food insecurity.
- Contributing to the development of early warning systems and scenario-based forecasting tools to support anticipatory action and response planning.

## **STANDARD MINIMUM QUALIFICATIONS**

- Be a Master's student or a graduate in Statistics, Data Science, Economics, Public Health, Geography, or a related field with a strong emphasis on data analysis and applied research.
- Excellent written and spoken English is required (proficiency/level C). Knowledge in Portuguese and/or French is an advantage.
- Knowledge of MS office suite (Outlook, Word, Excel and PowerPoint).
- Experience working in international or multicultural settings, ideally within humanitarian or development contexts is a plus.
- Some experience in the analysis of household survey data, including complex sampling designs and multi-indicator frameworks.
- Some experience working with food security, nutrition, or livelihoods data in operational or research settings.
- Experience integrating geospatial and Earth observation data into statistical or predictive models is highly desirable.
- Foundation in advanced statistical methods, including multivariate analysis, time series, and small area estimation.
- Knowledge of developing and applying predictive algorithms for food security or related domains.
- Ability to access, process, and analyze remotely sensed and Earth observation data for environmental and food security applications.
- Expertise in data visualization and dashboard development using tools such as Power BI, Tableau, or open-source alternatives.
- Communication and training skills, with the ability to translate complex analytical concepts into actionable insights for non-technical audiences.

## **TRAINING COMPONENTS**

Throughout the assignment, selected candidates have access to an industry leading learning platform, WeLearn. Depending on opportunities and availability of funds, he/she may participate in WFP workshops or seminars, as appropriate.

## **LEARNING ELEMENTS**

A series of statistical analyses and writeup based on recent household food security assessments, with clear documentation of methods and findings.

- A suite of practical tools to enhance food security analysis, which may include:
  - Sample size calculators tailored to different assessment designs
  - Survey costing tools for planning and budgeting
  - Automated pipelines for cleaning, analyzing, and reporting on key food security indicators
- At least one regional training session for country office staff on advanced data analysis techniques and tools relevant to food security monitoring.

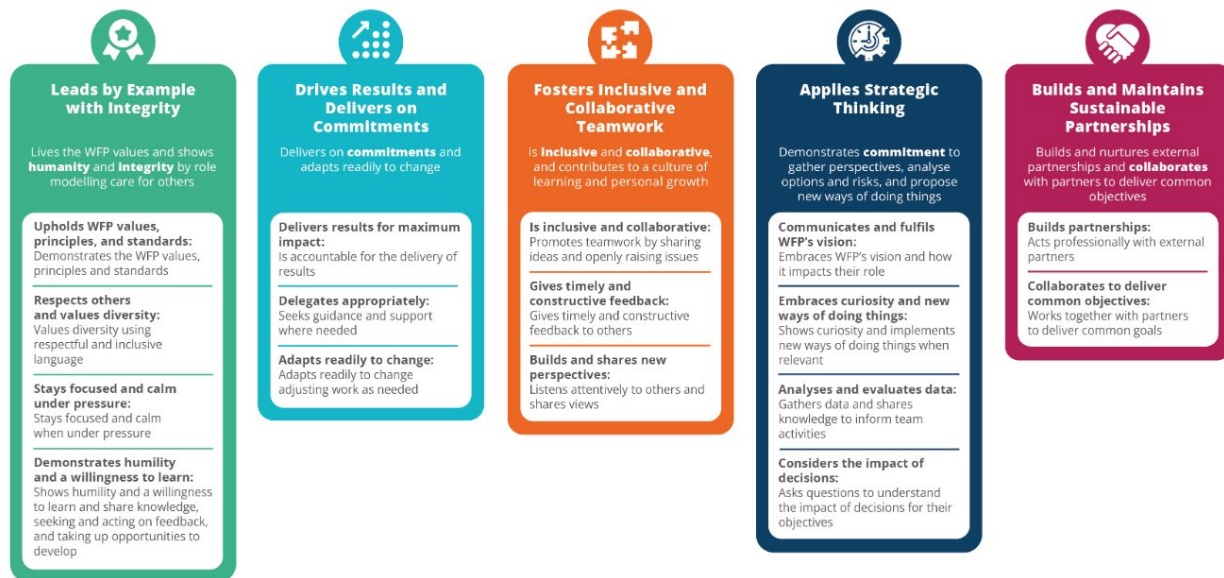
## TYPE OF ASSIGNMENT

This opportunity is particularly well-suited for students or recent graduates seeking practical experience in an international organization. It offers valuable exposure to WFP's operations and the chance to contribute meaningfully to its mission.

The selected candidate will receive IT equipment and training material; however, financial compensation and medical coverage are not provided by WFP. Applicants may seek alternative funding opportunities, such as university grants or external scholarships, to support their assignment.

## WFP LEADERSHIP FRAMEWORK

These are the common standards of behaviour that guide HOW we work together to accomplish our mission.



Different expectations of behaviour are defined depending on your grade and role/responsibilities within WFP.

*All employment decisions are made on the basis of organizational needs, job requirements, merit, and individual qualifications. WFP is committed to providing an inclusive work environment free of sexual exploitation and abuse, all forms of discrimination, any kind of harassment, sexual harassment, and abuse of authority. Therefore, all selected candidates will undergo rigorous reference and background checks. No appointment under any kind of contract will be offered to members of the UN Advisory Committee on Administrative and Budgetary Questions (ACABQ), International Civil Service Commission (ICSC), FAO Finance Committee, WFP External Auditor, WFP Audit Committee, Joint Inspection Unit (JIU) and other similar bodies within the United Nations system with oversight responsibilities over WFP, both during their service and within three years of ceasing that service.*

**Saving Lives  
Changing Lives**